



Hilsea Close | | Pendeford | WV8 IXY

£200,000

**Jackson**  
LILE & CLOSE



## Key features



## Description

Ideal for both first and second time buyers, also suitable for investors looking for valuable rental income, situated in a popular residential area well served by a wide range of local amenities. Wolverhampton City Centre is approximately 2.5 miles travelling distance.

The pleasantly arranged accommodation briefly comprises:



## Directions

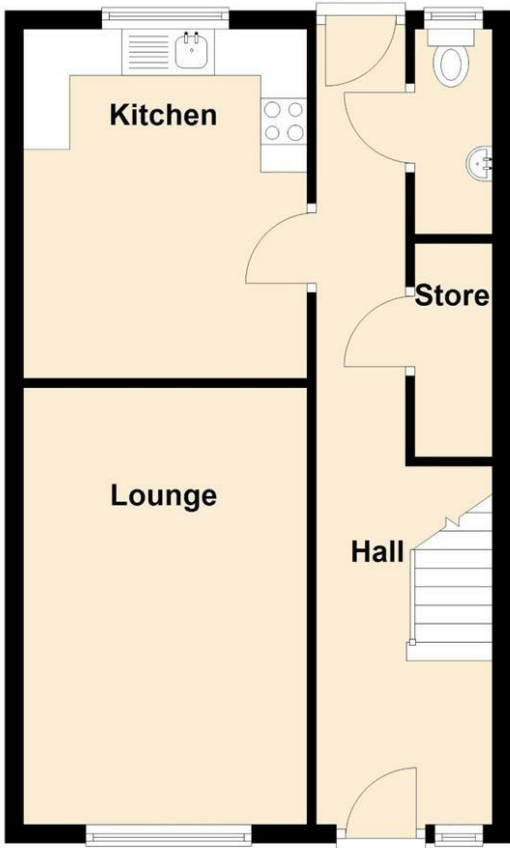




Floor plans

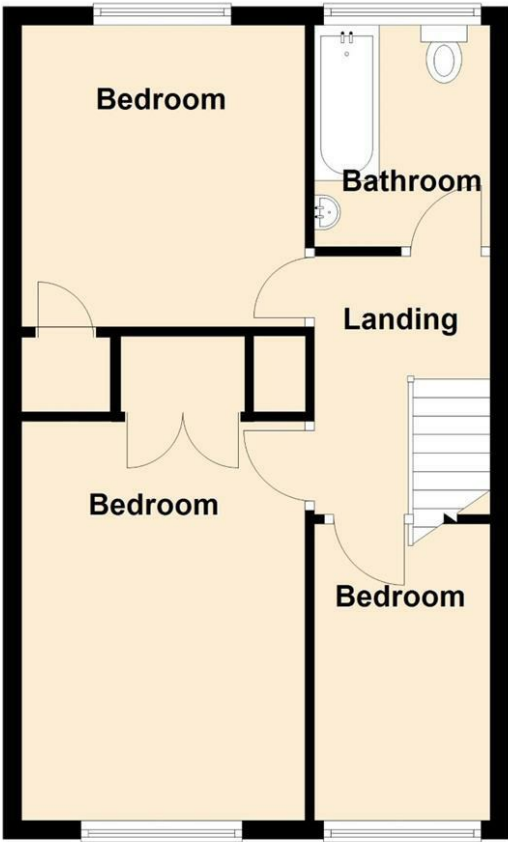
Ground Floor

Approx. 43.5 sq. metres (468.1 sq. feet)



First Floor

Approx. 43.5 sq. metres (468.1 sq. feet)



Total area: approx. 87.0 sq. metres (936.2 sq. feet)

Energy Efficiency Rating		
	Current	Potential
Very energy efficient - lower running costs		
(92 plus) A		
(81-91) B		
(69-80) C		
(55-68) D		
(39-54) E		
(21-38) F		
(1-20) G		
Not energy efficient - higher running costs		
England & Wales		EU Directive 2002/91/EC

**Jackson**  
LILE & CLOSE

12 and 13 King Street  
Wolverhampton  
West Midlands  
WV1 1ST  
01902 712812  
jacksonlileclose@btconnect.com  
<https://www.jacksonlileandclose.co.uk/#/>